

FocalPoint

Modular Projection Screen Designed for Meeting Rooms



EBERLE **AV**

Studio für audiovisuelle Präsentationslösungen

Siebengebirgsblick 5 · 53343 Wachtberg-Villip

Tel: 0228 - 31 10 55 · Fax: 0228 - 31 78 61

info@eberle-av.de · www.eberle-av.de

DRAPER[®]

www.draperinc.com

Draper, Inc. is pleased to announce an innovation in modular projection screens for portable applications: **The FocalPoint™**.

FocalPoint is designed for standard and small venues, such as meeting rooms or breakout rooms.

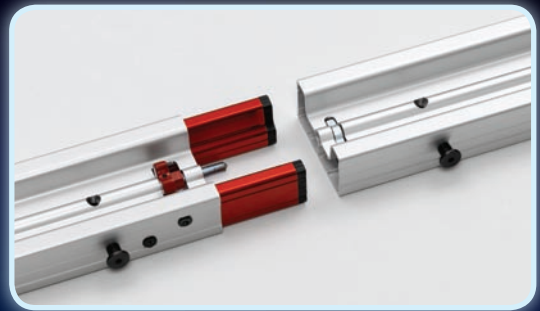
Strong Modular Frame

The FocalPoint utilizes modular frame construction that makes Draper's StageScreen® so popular. With small profile frame segments made of sturdy extruded aluminum, the FocalPoint is extremely rigid and durable, while remaining lightweight. With no hinges, the FocalPoint is strong, and still features quick and easy assembly.

Frame Components

All available sizes of FocalPoint are built from combinations of frame segments and corner pieces. Frame segments come in lengths of 2ft (61cm), 3ft (91cm), 3½ft (107cm), and 4ft (122cm). Each leg is constructed using these same frame segments and one leg base.

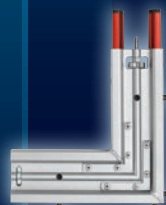
Frame segments are color-coded for easy identification, and FocalPoint ships with clearly marked assembly instructions and easy-to-follow assembly maps.



Easy frame assembly



Leg Base



Frame
Corner
Piece



4ft
(122cm)
Frame
Segment



3½ft
(107cm)
Frame
Segment



3ft
(91cm)
Frame
Segment



2ft
(61cm)
Frame
Segment



FocalPoint with Dress Kit Skirt



Complete Dress Kit



Valance Bar



2-Piece Drapery Bar

Dress Kits

Optional Dress Kits feature Inherently Flame Retardant (IFR) Velour as standard. A FocalPoint Dress Kit consists of a 60" (147cm) skirt, valance, and a pair of side drapes. The skirt features simple attachment with convenient magnetic fasteners. Valance bars and drapery bars hook instantly onto the viewing surface posts, and drapes and valance attach with DuraLoops.

Viewing Surface

The FocalPoint viewing surface attaches with Draper's unique DuraLoop™ bungees and convenient nylon pull-tabs. The result is a perfectly flat self-centering viewing surface that attaches quickly and easily—**WITH NO SNAPS**. In addition, the viewing surface includes a black border that extends past the edge of the frame for a finished appearance.

Viewing surfaces are available in Black-Backed M1300 for front projection. For rear projection, Cineflex and Low-Gain Cineflex neutral gray surfaces are available. Uniflex White viewing surface is suitable for either front or rear projection, and is ideal for edge blending. Custom surfaces and sizes are available.



Viewing surface attaches with DuraLoops



Viewing surface border provides a finished appearance

Standard Sizes and Formats

FocalPoint offers exact true formats in standard sizes up to 15' x 20' (4.6 m x 6.1 m)—no more nominal sizes. Call for custom sizes. Silver and black anodized frame colors are available.

FocalPoint ships complete with an appropriate number of carrying cases, in addition to a floor tarp to keep your viewing surface clean during assembly.

Configure standard and custom FocalPoint sizes, explore sizes that can be created from your existing frame inventory, and print or download color-coded assembly maps at www.draperinc.com/FocalPoint/build.aspx (available August, 2010).

Multiple patents pending.

EXACT IMAGE AREA

4:3 NTSC FORMAT

Diagonal	INCHES	CM
100"	60" x 80"	152 x 203
120"	72" x 96"	183 x 244
150"	90" x 120"	229 x 305
180"	108" x 144"	274 x 366
210"	126" x 168"	320 x 427
240"	144" x 192"	366 x 488
270"	162" x 216"	411 x 549
300"	180" x 240"	457 x 610

16:9 HDTV FORMAT

Diagonal	INCHES	CM
92"	45" x 80"	114 x 203
110"	54" x 96"	137 x 244
138"	67½" x 120"	171 x 305
165"	81" x 144"	206 x 366
193"	94½" x 168"	240 x 427
220"	108" x 192"	274 x 488
248"	121½" x 216"	309 x 549
275"	135" x 240"	343 x 610

16:10 FORMAT

Diagonal	INCHES	CM
94"	50" x 80"	127 x 203
113"	60" x 96"	152 x 244
142"	75" x 120"	191 x 305
170"	90" x 144"	229 x 366
198"	105" x 168"	267 x 427
226"	120" x 192"	305 x 488
255"	135" x 216"	343 x 549
283"	150" x 240"	381 x 610

DRAPER®

411 S. Pearl St., Spiceland, IN 47385 USA ■ 765-987-7999
fax 765-987-7142 ■ www.draperinc.com

Copyright © 2010 Draper, Inc. ■ Form FocalPointFlyer710 ■ Printed in the USA



30% PCW
Content